

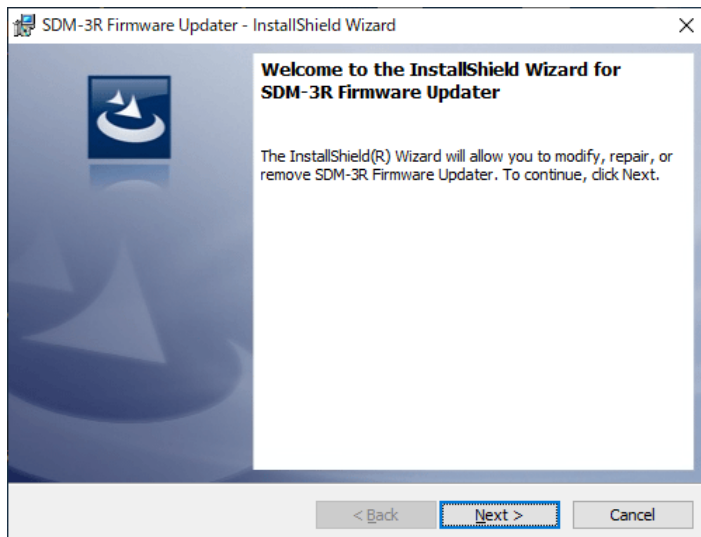
SDM-3R Firmware Update Instructions

Attention

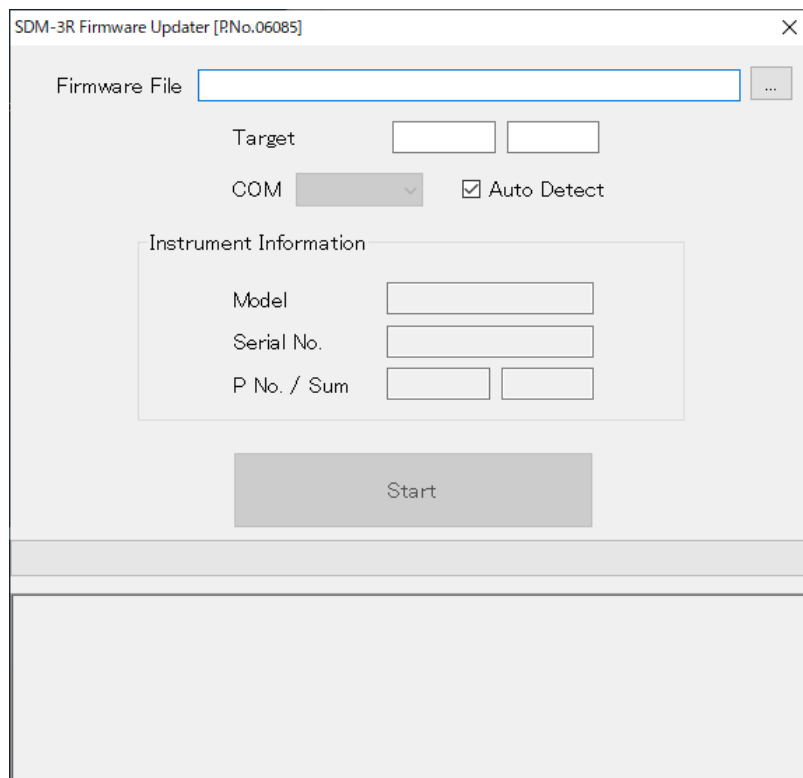
- Remove any IrDA dongle or USB serial adapter cable from the PC.
- Remove any GX instrument, USB memory stick, or LAN cable from the SDM-3R.
- If you have multiple SDM-3Rs, connect and update them one at a time.
- Do not remove power to the SDM-3R by unplugging the AC adapter during the firmware update and during update processing after SDM-3R restart. Doing so could prevent the SDM-3R from starting up.

Procedure

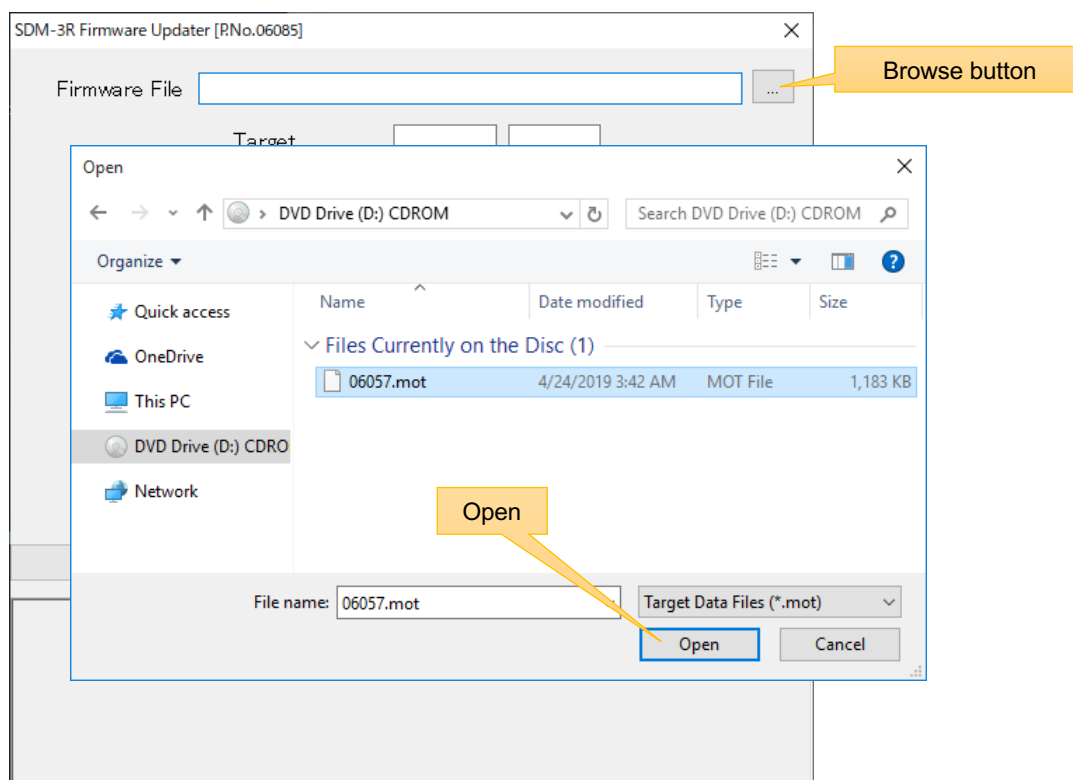
1. Launch *setup.exe* to install *SDM-3R Firmware Updater*.



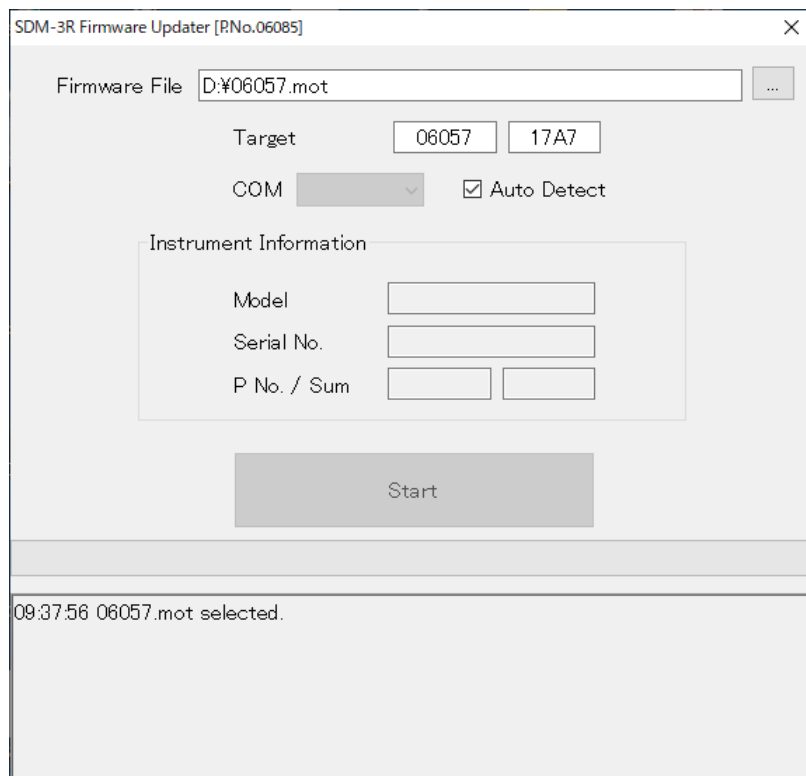
- From the desktop, find and launch the *SDM-3R Firmware Updater* shortcut.



- Click the browse button and navigate to and select the *.mot* file.



4. The *Target* fields will be populated with the program number and checksum.



SDM-3R Firmware Updater [RNo.06085]

Firmware File

Target

COM ☒ Auto Detect

Instrument Information

Model

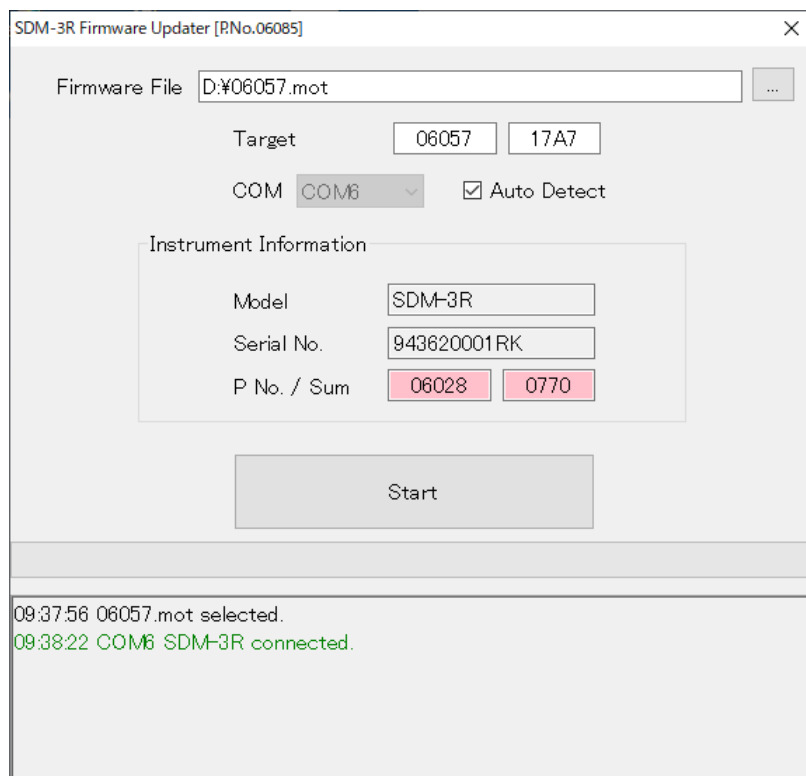
Serial No.

P No. / Sum

Start

09:37:56 06057.mot selected.

5. Connect the SDM-3R to the PC with a USB cable and turn the unit on. Once connection is established, the Updater will automatically load and display the *Instrument information Serial No.*, program no., and checksum (*P No. / Sum*). Note that the program no. and checksum fields will be red and not match what is displayed in *Target* (but these will match *Target* and turn green after the update is complete, with the *Start* button grayed out)



SDM-3R Firmware Updater [RNo.06085]

Firmware File

Target

COM ☒ Auto Detect

Instrument Information

Model

Serial No.

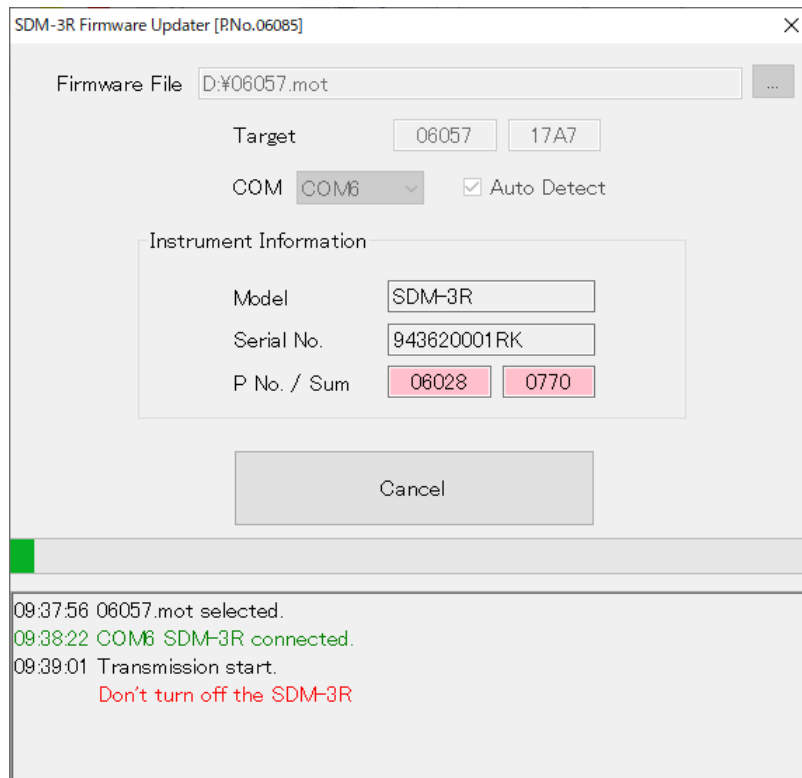
P No. / Sum

Start

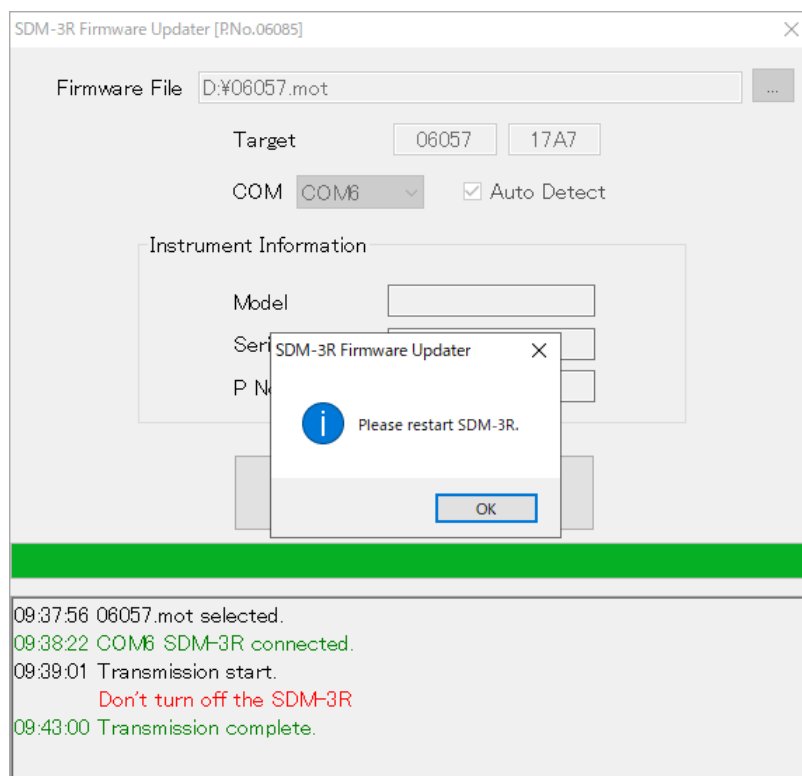
09:37:56 06057.mot selected.
09:38:22 COM6 SDM-3R connected.

6. Click *Start* to launch the firmware upload. During the upload, the button will change to *Cancel*.

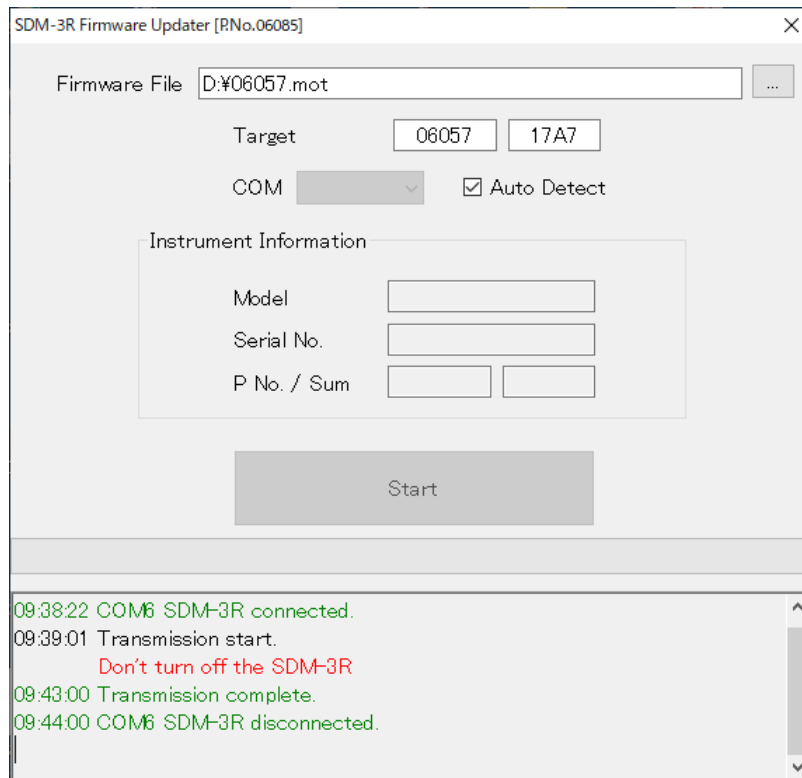
ATTENTION: Ensure that the SDM-3R does not lose power during the upload.



7. The firmware upload will complete in about 4 minutes. A message will pop up asking you to restart the SDM-3R. Click OK to close the dialog.

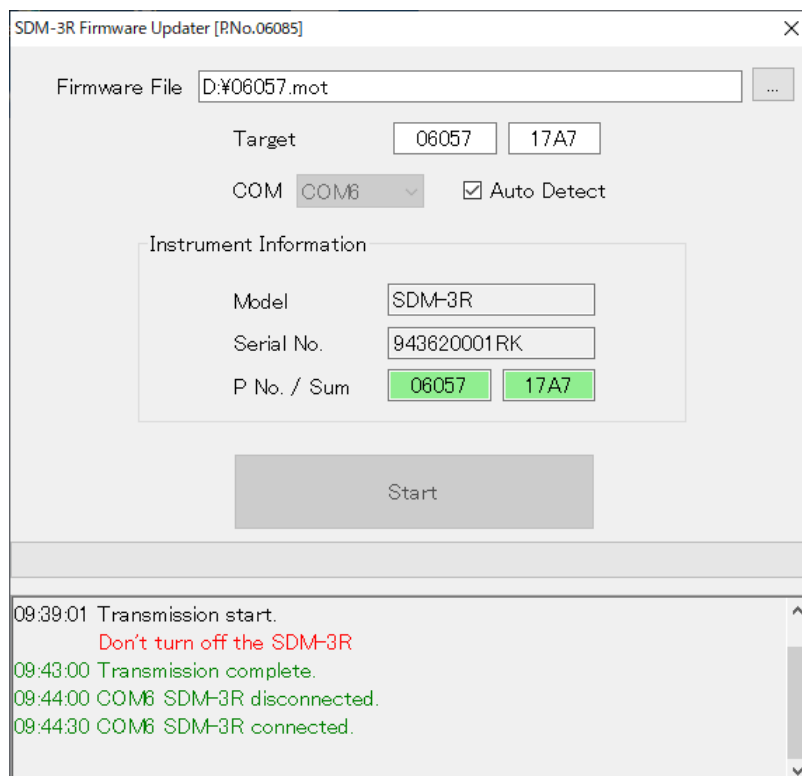


8. Turn off the SDM-3R.



9. Turn on the SDM-3R. The SDM-3R LED lamps will all turn orange and the firmware will be updated (in about 3 sec.). When connection is established with the updated SDM-3R, the *P No. / Sum* fields will match the *Target* fields and turn green.

ATTENTION: Ensure that the SDM-3R does not lose power during the upload.



10. Verify that the bottom fields are green and then close *SDM-3R Firmware Updater*. The firmware update is complete.

End