



Fixed System Installation



Mounting the Controller

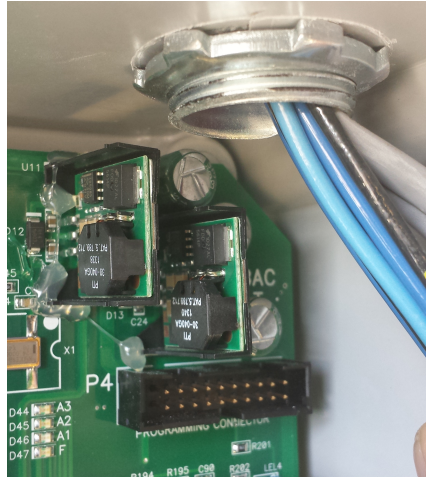


- Make sure there is sufficient space to mount controller.
- Make sure that door can be opened.
- Mount for easy access and visibility.
- Always use conduit hubs to route wires.

*2



Controller Wiring



- Do not drill the top case and run power wires into the unit.
- Noise from wiring will cause controller to malfunction.
- Condensation may drip down conduit and damage PCB.

*3



Grounding



- Proper grounding is essential to proper system operation.
- Connect transmitter wiring shields to the ground terminal on main PCB or conduit hubs.
- Grounding at transmitter and controller may create a ground loop.

*4



Transmitter Mounting

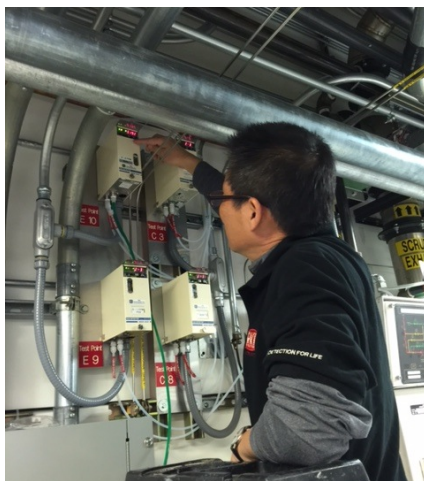


- Mount transmitter at eye level.
- Avoid mounting transmitters in areas of high vibration, extreme heat or cold.

*5



Transmitter Mounting



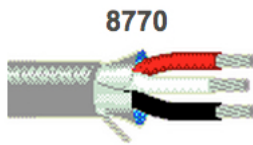
- Mount transmitter in a location that can be easily accessed.

*6



Transmitter Wiring

Belden Cable



- Use proper wire for each transmitter.
- Use the proper gauge wire for the distance needed.
- Insulated, shielded and jacketed cable.
- Follow local installation codes.

*7



Transmitter Mounting



- Mount transmitters properly.
 - Lighter gases such as methane on ceiling.
 - Heavier gases such as propane, mount near floor.
 - Always place transmitter as close as possible to potential leak source.

*8



Transmitter Mounting

Clean Installation



- Transmitters mounted in the breathing zone for general area monitoring.
- Transmitter labeling makes identification easy.

•9



Transmitter Sample Lines



- Use PTFE tubing (Teflon®) when detecting reactive gases.
- Keep sample tubing length as short as possible.
- Line filters protect pump and sensor from damage.

•10



Sealing Conduit



- For outdoor installations, seal threads to prevent water intrusion.
- Install conduit seal to prevent water from entering into housing.

• 11



Remote Cal Adapter



- Makes calibration simple for sensors that are mounted in locations that are difficult to access.

• 12



Battery Backup



- Battery backup will power controller and sensors during a power outage.
- Source proper battery back up to provide necessary current.

•13



Recording Devices

- Recording devices can provide data on exposure over time.
- Make sure that recording devices are compatible with controller output.



•14



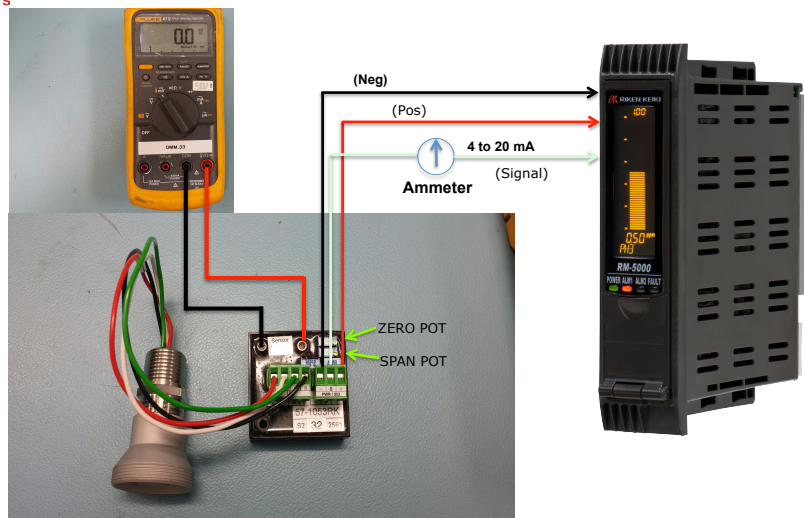
Communication

- RKI Instruments have several communication protocols:
 - 4 to 20 mA (most common)
 - Direct connect (can be used on all controllers except Beacon 800)
 - Modbus (found on M2A's)
 - PoE (Special order GD-70D's only)

•15



4 to 20 mA Communication





4 to 20mA Communication

- For combustible or toxic gases, set zero to 100mV with fresh air applied.



•17



4 to 20 mA Communication

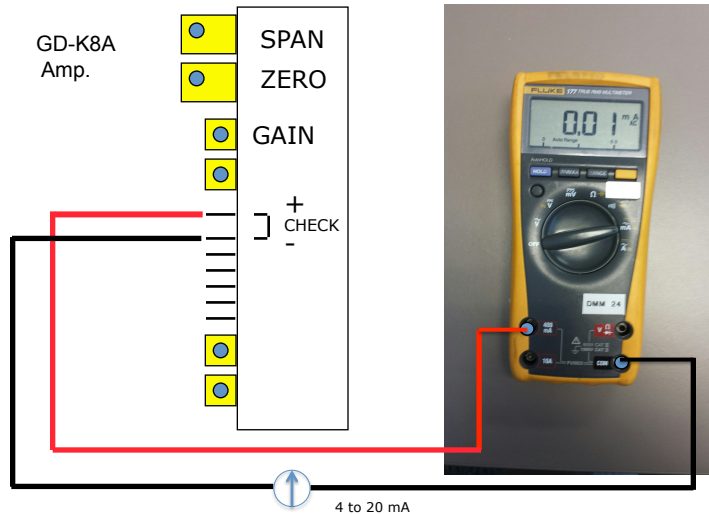


- When setting the span to 50% LEL, adjust the SPAN pot so DVM reads 300mV.
- Formula:
 - $$-(\text{Cal gas/Full Scale}) \times 400 + 100 = \text{mV setting}$$

•18



4 to 20 mA Communication



19



Calculations

- Standard S-Type Transmitter
 - Oxygen: $20.9/\text{full scale} \times 400 + 100$
 - Oxygen calibration setting in mV
 - Combustible & Toxic: $(\text{Cal gas}/\text{full scale}) \times 400 + 100$
 - Combustible/toxic span setting in mV
- Current Source Amplifier
 - Toxics: $(\text{Cal gas}/\text{full scale}) \times 16 + 4$
 - Toxic span setting in mA

*20



Direct Connect

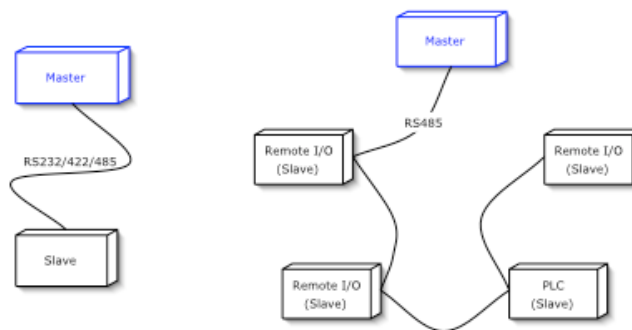


- Sensor directly wired to controller.
- No amplifier housing.

•21

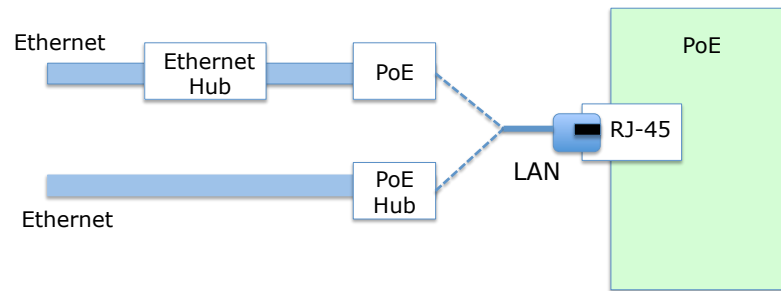


Modbus



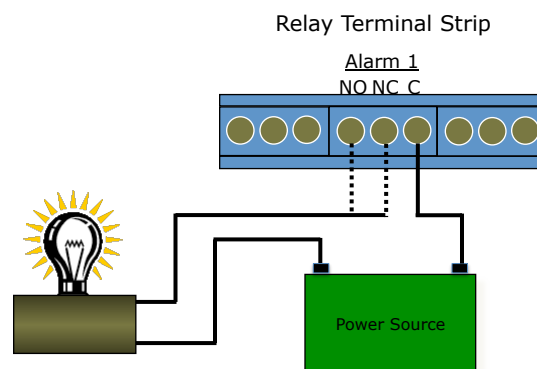
•22

PoE



•23

Relays



•24



Area Classifications

NEC Division System Gas Groups		
Area	Group	Representative Materials
Class I, Division 1 & 2	A	Acetylene
	B	Hydrogen
	C	Ethylene
	D	Propane
Class II, Division I & 2	E (Division 1 only)	Metal dusts, such as magnesium
	F	Carbonaceous dusts, such as carbon & Charcoal
	G	Non-conductive dusts, such as flour, grain
	None	Ignitable fibers/flyings, such as cotton lint, flax & rayon

•25



Questions?



•26

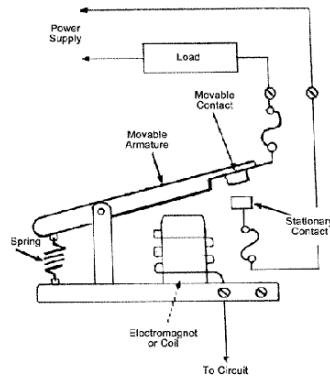


This image shows a single sheet of white paper with horizontal ruling lines. The lines are evenly spaced and run across the width of the page. There are no margins, text, or other markings on the paper.



Relays

- Form A
 - Common & Normally Open Contact
- Form B
 - Common & Normally Closed Contact
- Form C
 - Common, Normally Open and Normally Closed Contacts



Relays

- Dry contacts
 - Not powered
- Current ratings are critical
 - Verify that relay meets current capacity.
 - Use “Slave” or high power relay option on Beacon 800 to switch large loads.
- Use diode or Transient Voltage Suppressor (Tranzorb) to negate stored energy in high power relays to prevent damage.

